

MC1 Top Beam Clamps With Standard Mounth

Rod Size: 3/8" 、 1/2"

Finish: Plain / EG

Approals: UL listed 3/8" 、 1/2"
 FM approved 3/8" 、 1/2"

Function:

Structural attachment to top or bottom of metal beams, purlins, channel, or angle iron.

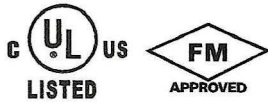
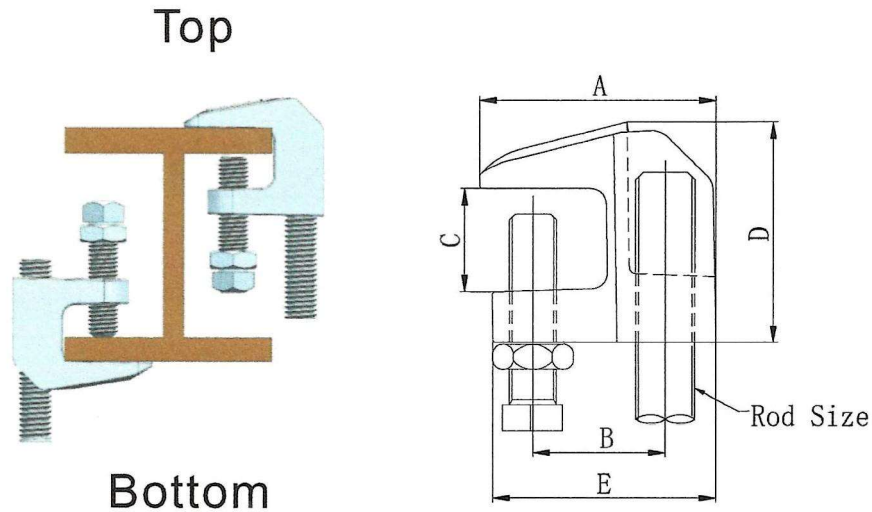
3/8" is reversible design .

1/2" is only for top position .(screw on bottom)

Features:

Complies with Federal Specifications A-A-1192A (Type 19) and Manufacturers' Standardization Society ANSI/MSS SPSP-58 (Type 19) which supersedes ANSI/MSS SP-69.

Setscrew must be tightened and torqued onto the sloped side of the I-beam.



Rod Size	A	B	C	D	E	Design Load (lbs)
3/8	1.870	0.874	0.750	1.559	2.740	500
1/2	1.764	1.000	0.750	1.614	1.685	950
5/8	1.875	1.094	0.750	1.811	1.870	1000
3/4	2.375	1.315	0.750	1.811	2.280	1150
7/8	2.375	1.315	0.750	1.811	2.280	1150

MC2 Top Beam Clamps With Wide Mouth

Rod Size: 3/8" 、 1/2"

Finish: Plain / EG

Approvals: UL listed 3/8" 、 1/2"
FM approved 3/8" 、 1/2"

Function:

Structural attachment to top or bottom of metal beams, purlins, channel, or angle iron.

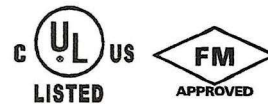
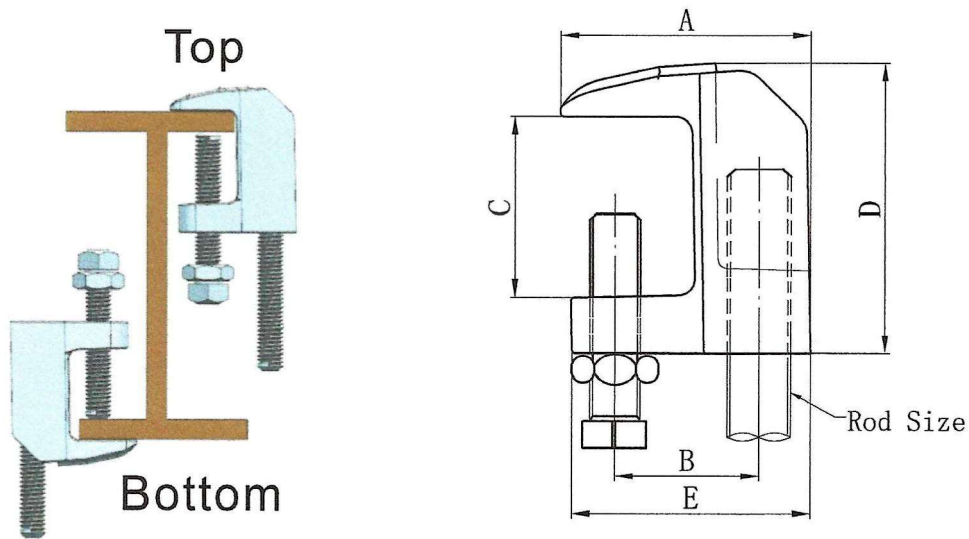
3/8" is reversible design .

1/2" is only for top position .(screw on bottom)

Features:

Complies with Federal Specifications A-A-1192A (Type 19) and Manufacturers' Standardization Society ANSI/MSS SPSP-58 (Type 19) which supersedes ANSI/MSS SP-69.

Setscrew must be tightened and torqued onto the sloped side of the I-beam.



Rod Size	A	B	C	D	E	Design Load (lbs)
3/8	1.724	1.000	1.250	1.984	1.622	500
1/2	1.744	1.000	1.250	2.016	1.642	950
5/8	2.244	1.375	1.250	2.244	2.213	1000
3/4	2.488	1.375	1.250	2.488	2.488	1150